

# VENUE SPECS

Update 08.05.2026

## **Address**

Kulturhuset Viften Rødovre Parkvej 130  
2610 Rødovre Denmark

## **Production & Technic**

Thomas Matyjasik Technic / Production  
+45 36709799  
viftenproduktion@gmail.com

# **FACILITIES**

## **Stage**

14m wide, 1m high, 10m open (procenie blankets)  
(Bütetec podiums, 1x2m)  
(Risers: 0,3m - 0,6m or 1,0m legs)

## **Capacity**

5m deep stage: sitting 415  
7m deep stage: sitting 393 / 700 standing  
9m deep stage: sitting 308  
Audience tribune: up to 16 rows (+ 3 on floor)  
Load-in: Directly on stage  
Parking: Parking license required from Viften upon arrival.  
Backstage area: Direct to stage  
2 Wardrobes w/shower & toilets

## **Concert/Theater Hall (without stage)**

8m high  
22m long  
17m wide

## **Tracks**

24pc

## **Swirls**

Hoist 180kg

## **AV**

Projector: Panasonic PT-MZ782 5250-7500 1m WUXGA  
Screen: 4x3m

## **Power**

1pc 64A STR / Kongeside  
2pc 32A STR / Kongeside  
1pc 16A STL / Dameside

## **Backline**

Yamaha G5 acoustic piano  
Yamaha Electronic Piano M140

## **DJ Desk**

Pioneer MEP-7000

# LIGHT SPECIFICATIONS

45ch Strand Dimmer

## **Desk**

Chamsys MagicQ Pro  
Avolite Arena

## **Moving Lights**

10pc DTS Nick NRG 1201 (20ch)  
8pc ACME XA-400 Spot Pro  
6pc Robe Painte

## **Blinders**

3pc ACME Stage Blinder IP BL-200  
8pc ACME Stage Par Color D15

## **Front**

6pc ETC Source Four Zoom 15-30 750w  
8pc Litez Fresno (LED Fresnel)

## **Smoke:**

2pc Smokefactory Hazer

## **Stored**

4pc ETC Fresnel 750w

## **Patch**

See Lightplot

# **SOUND SPECIFICATIONS**

## **PA**

D&B Q1 Linearray (4pc each side L&R)  
D&B Q7 Innerfill (2pc each side L&R)  
D&B V-GSUB (2pc each side L&R)  
1pc D80 D&B amp  
4pc D12 D&B amps  
D&B R1 - Remote

## **Monitor**

10pc D&B Max  
3pc D&B D12 amp  
1pc D&B analog d12  
2pc q-sub

## **FOH**

Yamaha CL5 & QL1 + RIO3224-D  
Yamaha DM3 & DM7 + RIO3224-D

## **Mics**

5pc Shure Beta58A  
5pc Shure SM58  
5pc Shure SM57  
2pc Shure Beta52  
1pc Shure Beta91A  
1pc MD 421  
2pc AKG C214  
4pc Sennheiser 604  
2pc Røde Nt5

## **Stored**

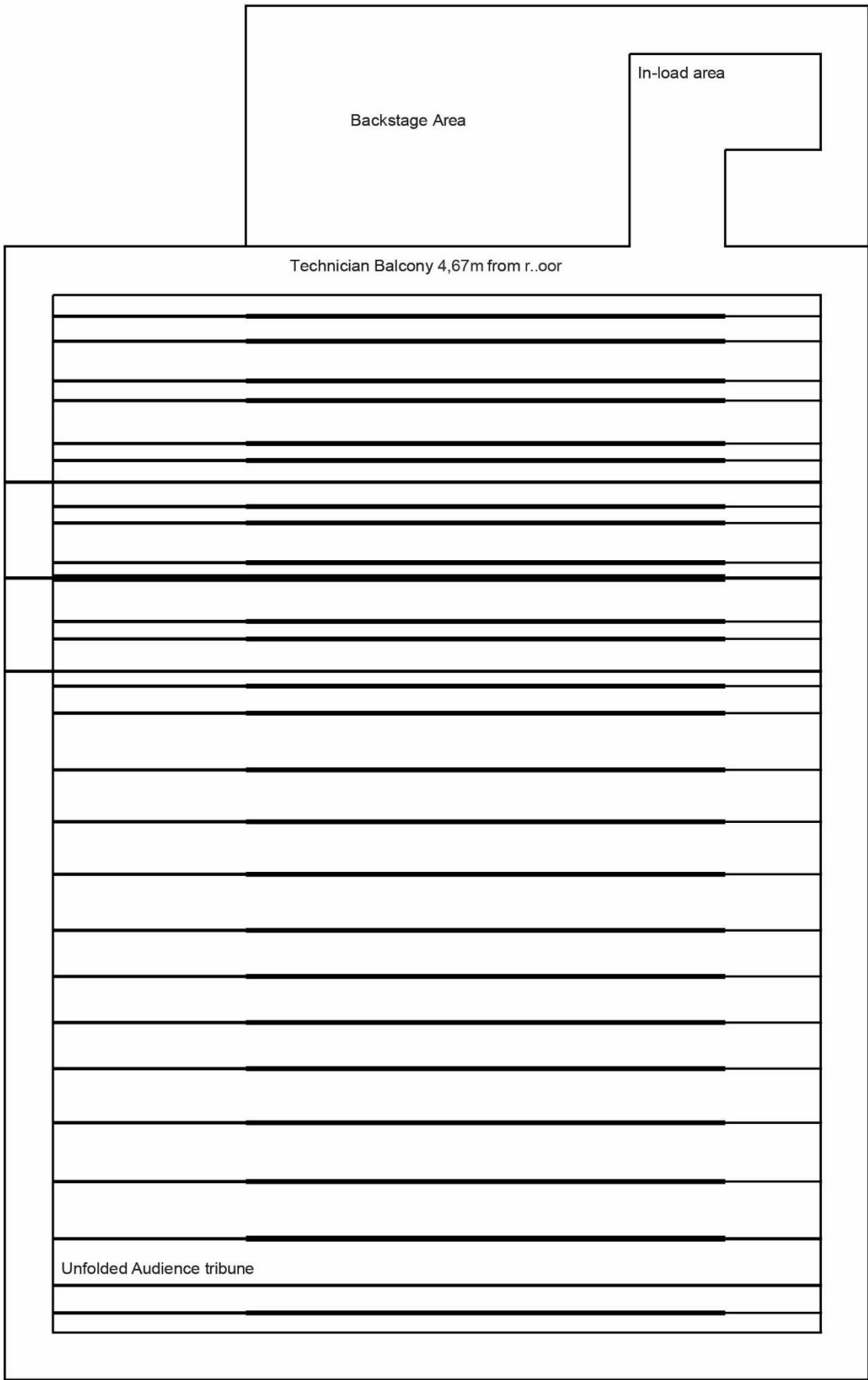
3pc Meyer MM4 + MPS-48 (frontfill) (stage <6m)  
TC 2290 Delay + TC M5000  
2pc Audio-technica Condenser Lo-2  
1pc AKG 112  
1pc AKG C460 B  
2pc Røde NT5  
4pc Sennheiser 604  
2pc EV N/D 308  
1pc Sennheiser e609

## **DI**

4pc LD systems  
2pc BSS 133  
3pc Radial Pro Active DI  
2pc Radial Passive DI  
1pc Radial Pro D2 Stereo Passive

## **Wireless**

Shure ULXD4Q 6ch  
4pc ULXD1 (beltpack) + 4pc ULXD2 (HH)  
Mics: DPA 2pc 4066 + 1pc 4266



Backstage Area

In-load area

Technician Balcony 4,67m from r..oor

Swir1: Hoist 180kg

5m Stage

7m Stage

9m Stage

LX24  
LX23

LX22  
LX21

LX20  
LX19

LX18  
LX17

LX16  
LX15

LX14  
LX13

LX12

LX11

LX 10

LX9

LX8

LX7

LX6

LXS

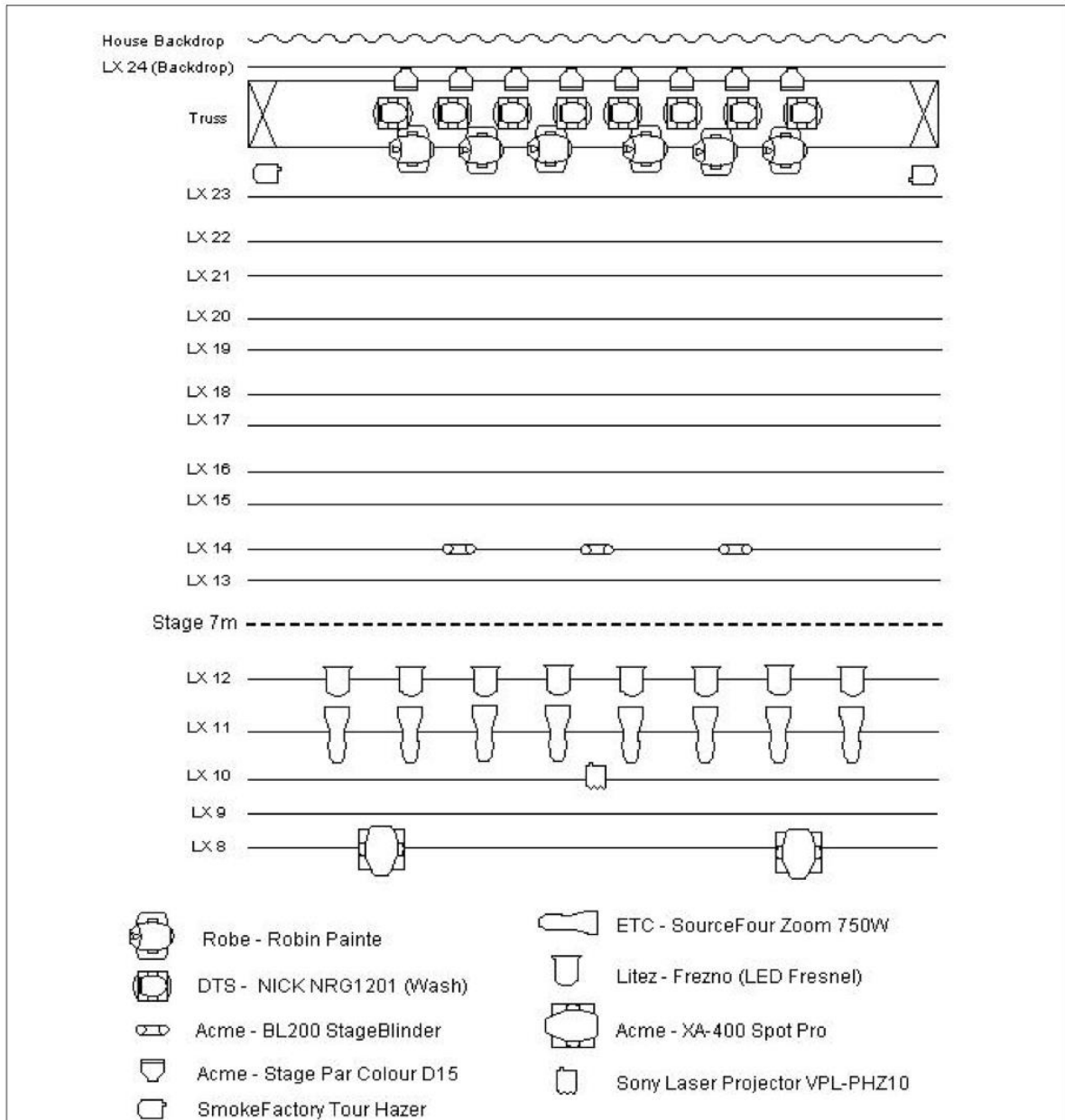
LX4

LX3

LX2

Unfolded Audience tribune

LX



**DMX Plan**

Lamp	Universe	Amount	Adress	CH Mode	Notes
DTS NICK NRG1201 (Wash)	A	8	1 – 160	20	
Robe Robin Painte	A	6	161 – 424	44	
ACME Stage Par Colour D15	A	8	425 – 478	6	Tross
SmokeFactory Tour Hazer	A	2	511 – 512	2	
ETC SourceFour Zoom 750W	B	6	20 – 25	1	Dimmers: 1-48
ACME XA-400 Spot Pro	B	2	199 – 248	25	
Fresno ZE-D2 HD	B	8	249 – 288	5	Patch: Silverstar ss808
ACME StageBlinder IP-BL200	B	2	289 – 294	2	
House Lights	C	54	1 – 54	1	Controller available

# LOADING MAP

